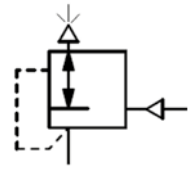


Description	Diaphragm back pressure regulators protect pneumatic devices against overpressure. If the pressure exceeds the setpoint, the pressure valve exhausts to the atmosphere until the pressure level is below the setpoint. It is advisable to select the pressure range as near as possible to the maximum setpoint.		
Media	compressed air or non-corrosive gases		
Overpressure	max. 17 bar	Pilot pressure	0 ... 10 bar
Accuracy	3% at 7 bar pilot pressure	Response sensitivity	2.5 mbar
Adjustment	depending on the level of signal pressure the response value will change accordingly		
Gauge port	1/4" NPT on both sides of the body, screw plugs supplied	Mounting position	any
Temperature range	0 °C to 90 °C / 32 °F to 194 °F, for appropriately conditioned compressed air down to -40 °C / -40 °F		
Material	Body: aluminium die casting O-rings: NBR/Buna-N, optionally FKM	Elastomer: NBR/Buna-N Inner valve: brass and aluminium	



**G^{3/8} up to G^{3/4}, 3500 l/min
0... 10 bar**

Dimensions			Relief capacity l/min*1	Over-pressure max. bar	Adjustment range bar	Connection thread G	Order number	D*
A	B	C						
mm	mm	mm						

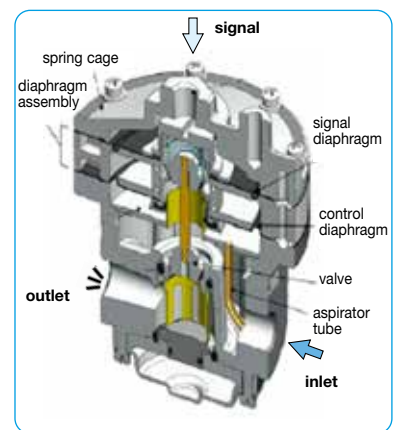
Back pressure regulator, pilot-operated						pilot pressure overpressure	0...10 bar max. 17 bar	DB450
87	129	40	3500	17	0...10	G $\frac{3}{8}$	DB450-03	
						G $\frac{1}{2}$	DB450-04	
						G $\frac{3}{4}$	DB450-06	



DB450

Special options, add the appropriate letter

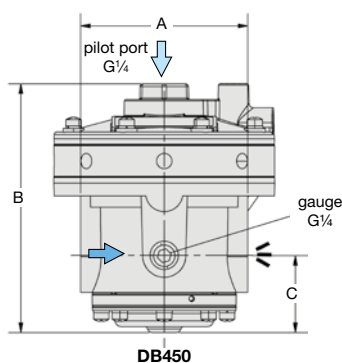
NPT	connection thread	DB450-0. N
FKM elastomer		DB450-0. V



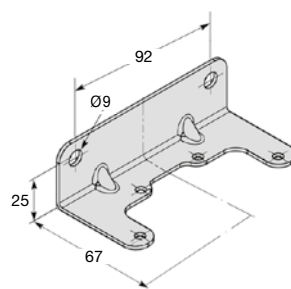
cross-section

Accessories, enclosed

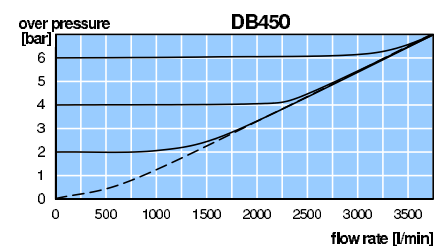
pressure gauge	Ø 63 mm, 0...*2 bar, G ^{1/4}	MA6302-..*2
gauge connection	made of brass, adapter 1/4" NPT - G ^{1/4} female	AM-06
mounting bracket	made of steel	BW00-47



DB450



BW00-47



*1 at 6 bar inlet pressure and open outlet

*2 02 = 0...2.5 bar, 04 = 0...4 bar, 06 = 0...6 bar, 10 = 0...10 bar

* Product group

